

# Hello!

# Click&complete!

I'm Little Owl and this is where I live.  
My tree changes quite a lot throughout the year!  
Look at the pictures and write the names of the seasons.



In **spring**, new leaves and blossoms appear on the tree.  
In **summer**, my tree is covered in green leaves. There are lots of red apples too!  
In **autumn**, leaves turn yellow, red and brown, and then they fall to the ground.  
In **winter** there are no leaves at all, and the branches are bare.

Some trees do not lose their leaves and are green all year round. They are called **evergreen** or **coniferous trees**.

**Read the text and then write the missing numbers.**

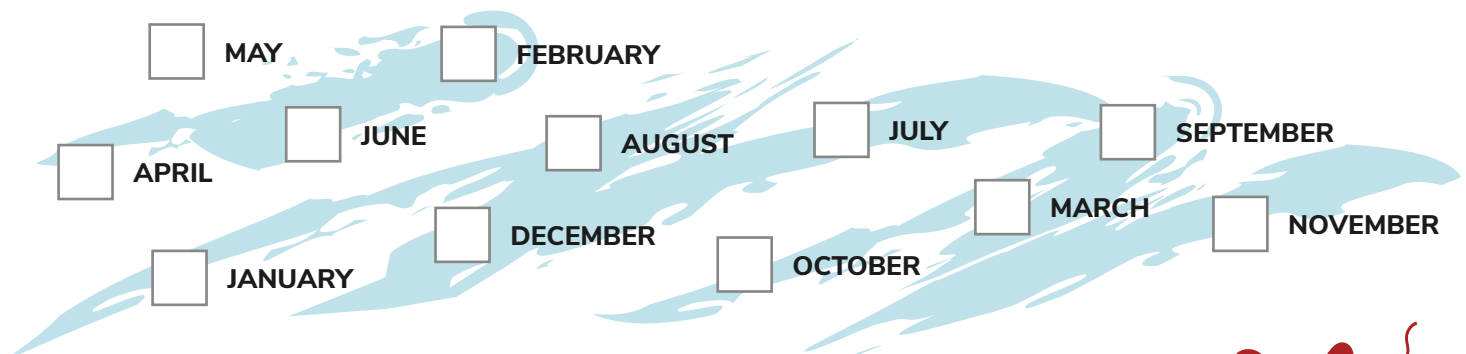
\_\_\_\_\_ days has September, April, June and November.

All the rest have \_\_\_\_\_.

Except for February alone which has \_\_\_\_\_  
days of time. And the LEAP YEAR is \_\_\_\_\_.



**Number the months from 1 to 12.**



Draw a circle around the name of your birthday month.  
What is your best friend's birthday month and season?

My birthday is on \_\_\_\_\_ and it is in \_\_\_\_\_.

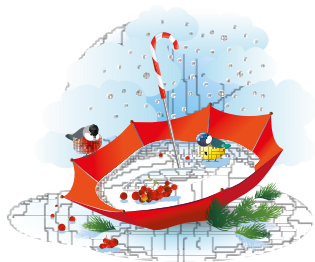
My best friend's birthday is on \_\_\_\_\_ and it is in \_\_\_\_\_.



# MONTHS AND SEASONS

Write the names of the months and match them to the seasons.

How many days are there in each month? Write the correct numbers in the circles.



WINTER



SPRING



SUMMER



AUTUMN

..... ○

..... ○

..... ○

..... ○

..... ○

..... ○

..... ○

..... ○

..... ○

..... ○

..... ○

..... ○

Which season do you think the owl is dressed for?

Write the name of the correct season under each picture.



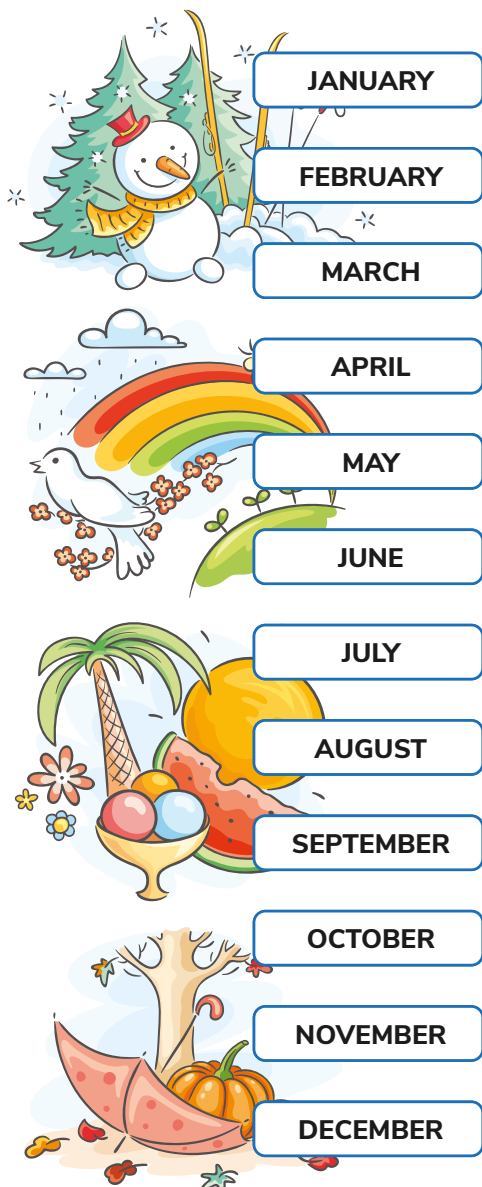
The season in picture 1 is \_\_\_\_\_ because \_\_\_\_\_

The season in picture 2 is \_\_\_\_\_ because \_\_\_\_\_

The season in picture 3 is \_\_\_\_\_ because \_\_\_\_\_

The season in picture 4 is \_\_\_\_\_ because \_\_\_\_\_

Match the months and their descriptions!



- ☐ Winter is over and this is when spring officially starts. Days are getting longer but it can still be quite cold.
- ☐ It is probably the most beautiful month of the year: with blooming flowers and beautiful weather.
- ☐ People decorate Christmas trees and exchange presents.
- ☐ It is the second month of summer holidays. The weather can be very hot!
- ☐ It is a dark month when days are short and the weather is usually unpleasant. This is also the month when Poland celebrates its Independence Day and Americans celebrate Thanksgiving.
- ☐ On the last day of this month people celebrate Halloween and kids go trick-or-treating.
- ☐ Summer holidays are over and kids go back to school.
- ☐ This is the first month of the year when people make resolutions and try to change their lives for the better.
- ☐ It is the shortest month of the year and the one when people celebrate Valentine's Day.
- ☐ Summer starts this month. The weather is usually very nice and the school year ends!
- ☐ It is one of the hottest months of the year with long and sunny days. People go on holidays, practice water sports and have fun!
- ☐ Spring is in the air, but the weather can be very changeable – a bit like in winter and a bit like in summer!

Can you find the 12 months in the grid below?

|   |   |   |   |   |   |   |   |   |   |   |   |   |   |
|---|---|---|---|---|---|---|---|---|---|---|---|---|---|
| A | U | D | E | C | E | M | B | E | R | V | M | Z | N |
| U | J | Y | F | U | N | S | E | R | Z | J | M | S | I |
| G | A | N | M | A | Y | D | T | G | I | U | J | E | B |
| U | N | R | A | P | M | S | J | O | K | N | Y | P | H |
| S | U | T | R | K | P | I | R | V | M | E | E | T | D |
| T | A | F | C | N | O | V | E | M | B | E | R | E | T |
| M | R | G | H | C | J | W | A | P | R | I | L | M | A |
| A | Y | O | C | T | O | B | E | R | U | L | A | B | K |
| W | P | W | O | C | Y | U | S | N | L | R | M | E | H |
| J | U | L | Y | A | O | F | E | B | R | U | A | R | Y |

# Click&choose!

## WINTER

### Choose the best winter weather words:



sunny



partly cloudy



hot



cloudy



rainy



snowy



foggy



stormy



windy

### Choose the best winter clothes words:



T-shirt



dress



skirt



sweater



shirt



mittens



sunglasses



blouse



trousers



socks



hat



gloves



scarf



coat



jacket



sandals



boots

### Choose the best winter food words:



hot chocolate



hot tea



lemonade



ice-cream



gingerbread



cookies



candy cane



turkey



mashed potatoes



carrots



chocolate bunny



strawberries



oranges

### Do you know how the months of the year got their names?

#### They have their origins in ancient Rome!

January is named after Janus, the Roman god of beginnings. February comes from the word 'februum' used to describe preparation for the coming of spring. March was named after the Roman god of war, Mars. April used to be the second month of the Roman calendar. It comes from the word 'aprilis' meaning to open, because flowers opened their buds in spring. May was named after the Greek goddess Maia. June was the fourth month of the year before the Julian calendar was introduced. Its name comes from Juno, the goddess of marriage and childbirth. July was named after Julius Caesar because he was born that month. August got its name from the Roman emperor Augustus. September gets its name from the Latin word for seven because it was the seventh month of the year. October, November and December got their names from the Latin words for eight, nine and ten.



# Click&match!

## IT'S WINTER NOW!

### Look! It is snowing!

In **December** families get together to spend time around the Christmas tree.

The new year starts in **January**. The weather can be really cold and snowy!

**February** is the shortest month of all. It is special in many ways. This is the month when people celebrate Valentine's Day and give love and hugs to the ones they love and care about!



### Match the words and the pictures and then circle the winter words.

  
PRESENTS

  
SNOWMAN

  
SNOW



  
CHRISTMAS CRACKERS

  
SLEDGE

  
MITTENS



  
CHERRIES

  
COSTUME

  
LEMONADE

  
SUNGLASSES

  
SWIMMING

  
NEST

  
BIKE

  
SHORTS

  
SWIMMING

  
CANDLES

  
TEA

  
ICE SKATES

  
SNOWFLAKE

  
EXPLOSIVES

  
FLOWERS

  
ANGELS

  
SKIS

  
GLOVES

  
SUNGLASSES

  
GLOVES

  
NEST

  
BOOTS

  
GINGERBREAD

  
ANGELS

### Let's celebrate!

Match the dates and the celebrations.

|               |                       |
|---------------|-----------------------|
| 6th December  | Christmas Eve         |
| 22nd December | New Year's Eve        |
| 24th December | Saint Nicholas' Day   |
| 25th December | Saint Valentine's Day |
| 26th December | First day of winter   |
| 31st December | Epiphany              |
| 1st January   | Christmas Day         |
| 6th January   | New Year's Day        |
| 14th February | Boxing Day            |

# Click&match!

## IT'S SPRING NOW!

Trees and flowers start to bloom.

Birds make nests and bears wake up from their winter sleep.

Do you know the spring months? They are \_\_\_\_\_, \_\_\_\_\_ and \_\_\_\_\_.

In **March** the wind blows the cold winter away.

In **April** the world changes from grey to green. It is a month of rainbows and new beginnings!

**May** is a month of sunshine and colourful flowers.



### Match the dates and the celebrations:

|                        |                                      |
|------------------------|--------------------------------------|
| 5 <sup>th</sup> March  | Mother's Day (USA)                   |
| 14 <sup>th</sup> March | Mother's Day (UK)                    |
| 17 <sup>th</sup> March | Mother's Day (Poland)                |
| 21 <sup>st</sup> March | Flag Day (Poland)                    |
| 22 <sup>nd</sup> March | May Day or International Workers Day |
| 1 <sup>st</sup> April  | St. Patrick's Day                    |
| 22 <sup>nd</sup> April | Constitution Day (Poland)            |
| 1 <sup>st</sup> May    | First Day of spring                  |
| 2 <sup>nd</sup> May    | Earth Day                            |
| 3 <sup>rd</sup> May    | World Book Day                       |
| 9 <sup>th</sup> May    | Pi Day                               |
| 26 <sup>th</sup> May   | April Fools' Day                     |

### Label the pictures using the words from the table and circle the spring words!



nest   kittens   daffodils   skates   caterpillar   bunny   bee  
Easter eggs   sunglasses   rainbow   daisies   pumpkin   gloves  
snowflakes   kite   umbrella   mushrooms   ladybird   stork   frog

# Click&play!

## IT'S SUMMER NOW!

The school year ends, and children start their summer holidays. Hooray!

**June** is usually a warm and sunny month. The weather gets hotter and days get longer. Summer starts on June 22nd – the longest day of the year!

**July** is in the middle of summer – a month of summer heat and summer fun!

**August** is the last month of summer holidays. Sometimes it is very hot and dry with lazy summer afternoons, long walks on the beach and mountain hikes.



**Summer wordsearch: find the summer words in the grid and label the pictures.**

|   |   |   |   |   |   |   |   |   |   |   |   |   |   |   |   |   |   |   |   |   |   |   |   |
|---|---|---|---|---|---|---|---|---|---|---|---|---|---|---|---|---|---|---|---|---|---|---|---|
| C | A | M | P | F | I | R | E | M | E | D | L | E | G | E | P | U | C | E | H | R | S | L | S |
| H | Q | T | S | H | E | L | L | O | O | W | S | U | N | G | L | A | S | S | E | S | W | E | U |
| E | O | R | E | L | A | X | D | U | Z | K | P | V | Z | P | A | B | L | C | U | J | I | M | I |
| A | T | U | A | R | Q | S | U | N | S | C | R | E | E | N | N | H | B | O | A | T | M | O | T |
| T | A | C | A | N | O | E | H | T | K | Z | Q | T | R | S | E | V | C | J | F | L | S | N | C |
| W | B | E | A | C | H | J | L | A | K | E | S | O | G | R | Q | T | E | N | T | P | U | A | A |
| A | F | T | I | A | T | K | Z | I | Y | O | Z | W | B | A | C | K | P | A | C | K | I | D | S |
| V | K | T | R | U | N | K | S | N | U | G | O | E | Y | P | A | S | S | P | O | R | T | E | E |
| E | G | F | W | F | I | W | I | S | A | S | F | L | I | P | F | L | O | P | S | Q | Y | W | U |
| J | H | W | A | T | E | R | M | E | L | O | N | G | D | S | A | N | D | C | A | S | T | L | E |



# Click&solve!

## IT'S AUTUMN NOW!

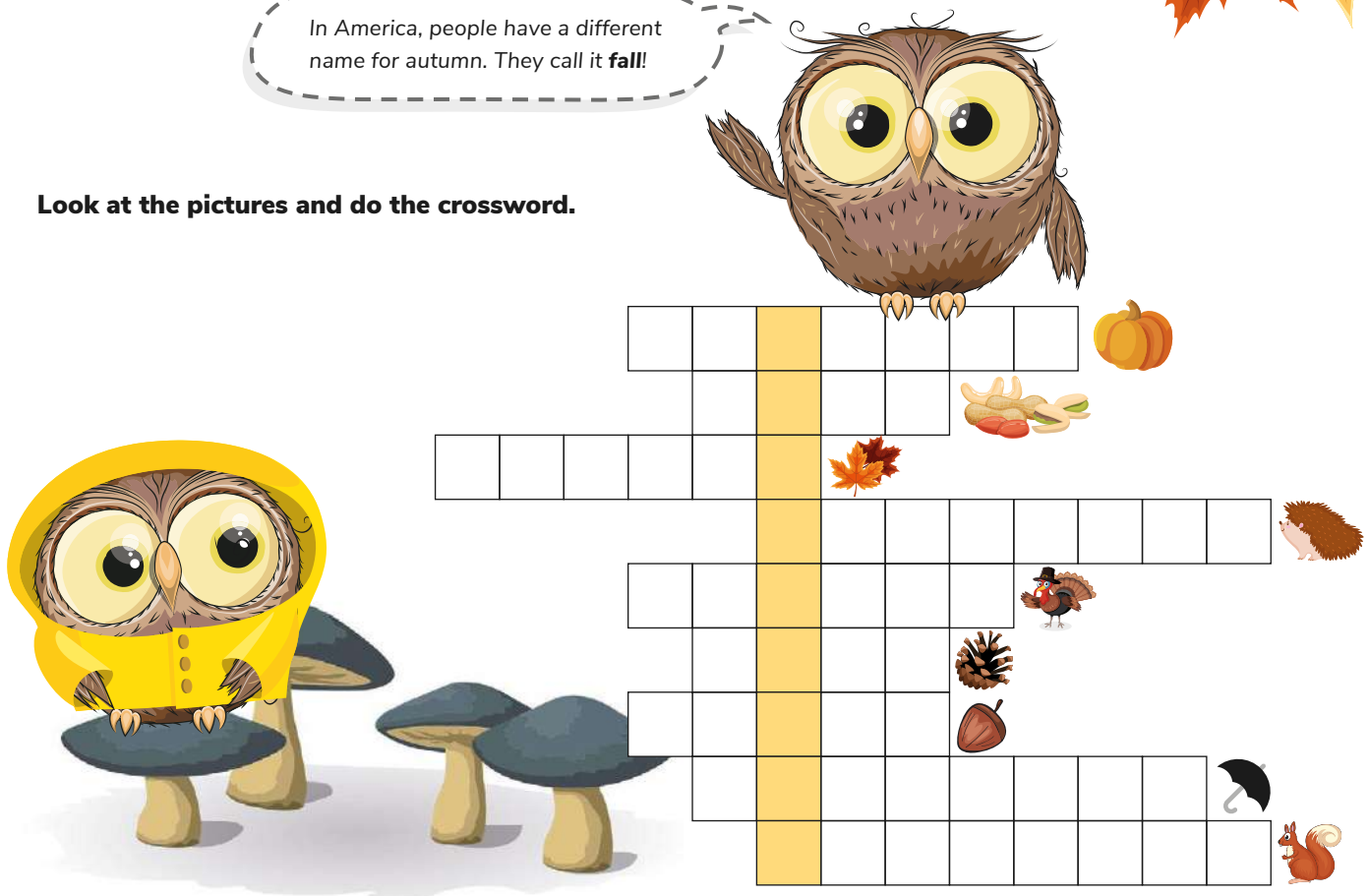
**Autumn** is the season between summer and winter. Leaves on trees change colour from green to yellow, red and brown. And then they fall to the ground.

In autumn, the days get shorter and colder. Many birds fly to warmer countries and stay there until next spring. Sometimes it rains quite a lot and there are mushrooms in the woods!



In America, people have a different name for autumn. They call it **fall**!

Look at the pictures and do the crossword.



Mushrooms like wet and warm weather and they grow very fast. They have different colours and shapes.

Some mushrooms are edible which means you can eat them, and some are poisonous and can even kill you. People should never pick and eat mushrooms growing in the wild unless they know for sure which ones are safe to eat. The act of looking for mushrooms is called mushrooming.

Look at the pictures. Do you know which mushrooms are edible ☒ and which are poisonous ☐ ?

